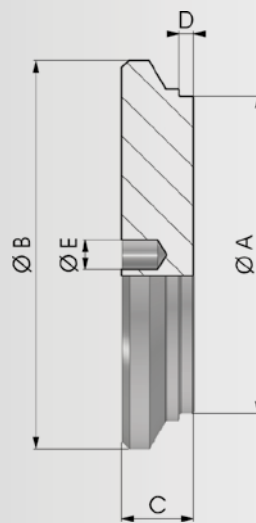


> Materiale di produzione:

Acciaio S355JR - ASTM A105

> Production material :

Steel S355JR - ASTM A105



COD.	A	B	C	D	Kg
NBFP050060017	50	60	17	4	0,33
NBFP050065018	50	65	18	4	0,38
NBFP060070019	60	70	19	4	0,51
NBFP060075019	60	75	19	4	0,56
NBFP063078022	63	78	22	4	0,72
NBFP070080022	70	80	22	4	0,79
NBFP070085022	70	85	22	4	0,86
▶ NBFP075090022	75	90	22	4	0,97
NBFP080095025	80	95	25	4	1,25
NBFP080100025	80	100	25	4	1,34
NBFP085100025	85	100	25	4	1,39
NBFP090105026	90	105	26	4	1,59
NBFP090110026	90	110	26	4	1,69
NBFP100115030	100	115	30	4	2,25
NBFP100120030	100	120	30	4	2,40
NBFP110125031	110	125	31	7	2,66
NBFP110130031	110	130	31	7	2,82
NBFP120140034	120	140	34	7	3,67
NBFP125145035	125	145	35	7	4,03
▶ NBFP130150035	130	150	35	7	4,37
NBFP140160040	140	160	40	7	5,80
NBFP140170040	140	170	40	7	6,24
▶ NBFP150170042	150	170	42	7	6,93
NBFP160180045	160	180	45	7	8,32
NBFP160190045	160	190	45	10	8,83

▶ a richiesta su lotto minimo / on request on a minimum batch