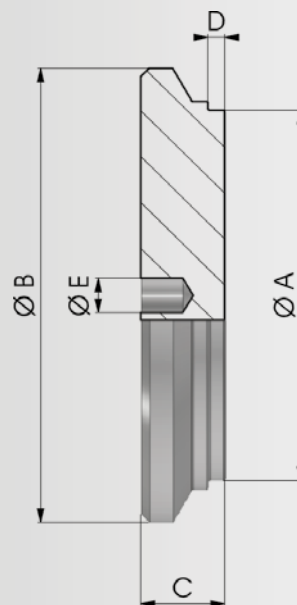


> **Materiale di produzione:**

Acciaio S355JR - ASTM A105

> **Production material :**

Steel S355JR - ASTM A105



COD.	A	B	C	D	E	Kg
NBFC00025035	25	35	7	2	3.2X3	0,04
NBFC00030040	30	40	8	2	4.2X4	0,06
NBFC00032042	32	42	8	2	4.2X4	0,07
NBFC00035045	35	45	10	2	4.2X5	0,10
NBFC00040050	40	50	10	2	4.2X5	0,13
NBFC00045055	45	55	10	2	4.2X5	0,16
NBFC00050060	50	60	10	2	4.2X5	0,19
NBFC00055065	55	65	12	2	4.2X6	0,27
NBFC00060070	60	70	12	2	4.2X6	0,32
NBFC00063073	63	73	12	2	4.2X6	0,35
NBFC00065075	65	75	12	2	4.2X6	0,36
▶ NBFC00065080	65	80	12	2	4.2X6	0,40
NBFC00070080	70	80	12	2	4.2X6	0,43
NBFC00070085	70	85	12	2	4.2X6	0,45
NBFC00075090	75	90	12	2	4.2X6	0,51
NBFC00080090	80	90	12	2	4.2X6	0,54
NBFC00080092	80	92	12	2	4.2X6	0,56
NBFC00080095	80	95	12	2	4.2X6	0,57
NBFC00085100	85	100	15	2	4.2X6	0,82
NBFC00090105	90	105	15	2	4.2X6	0,91
NBFC00100115	100	115	15	2	4.2X6	1,10

▶ a richiesta su lotto minimo / on request on a minimum batch