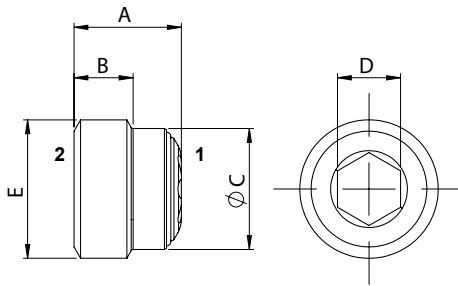
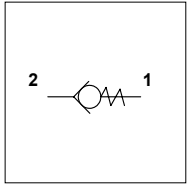


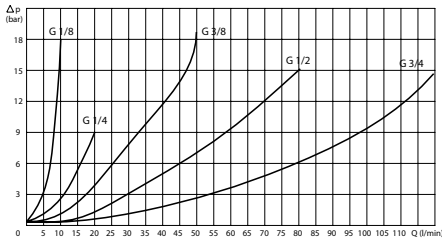
## WUC ISI

### TECHNICAL DATA

- **Flow:** See table
- **Max working pressure:** 350 bar
- **Cracking pressure:** 0,5 bar
- **Materials:** Cartridge in Steel Zinc Plated
- **Version:** Poppet Type - Direct Acting
- **Cavity:** See table
- **Installation torque:** See table
- **Weight:** See table



### PRESSURE DROP CURVES



PORTS					
E	1/8	1/4	3/8	1/2	3/4
DIMENSIONS					
A	8	10,2	11,7	13,5	17,1
B	3,9	5,5	7	7,9	11,5
C	8,5	11,5	14,9	18,7	24
D (Hex)	4	6	8	10	10
Max Flow (l/min)	10	20	50	80	120
Cavity	FW1802101	FW1402101	FW3802101	FW1202101	FW3402101
Install. Torque (N/m)	10	15	30	40	50
Weight (kg)	0,003	0,007	0,015	0,023	0,050

### ORDERING CODE

WUC

ISI

Ports Size:

- 1/8
- 1/4
- 3/8
- 1/2
- 3/4