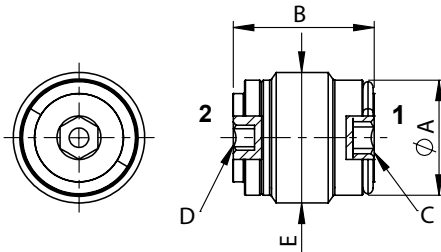
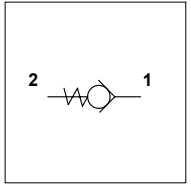


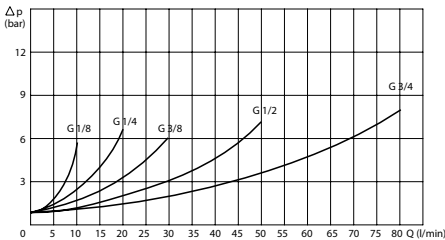
WUC I

TECHNICAL DATA

- **Flow:** See table
- **Max working pressure:** 350 bar
- **Cracking pressure:** Standard 1 bar, other springs only on request
- **Materials:** Cartridge in Steel Zinc Plated
- **Version:** Ball Type - Direct Acting
- **Cavity:** See table
- **Installation torque:** See table
- **Weight:** See table



PRESSURE DROP CURVES



PORTS					
E	1/8	1/4	3/8	1/2	3/4
DIMENSIONS					
A	8,4	11,3	14,8	18,5	24
B	12,5	17	18,5	22,5	28
C (Hex)	-	3	4	6	8
D (Hex)	2	2,5	3	5	8
Max Flow (l/min)	10	20	30	50	80
Cavity	FW1802100	FW1402100	FW3802100	FW1202100	FW3402100
Install. Torque (N/m)	2	4	6	10	20
Weight (kg)	0,004	0,013	0,020	0,040	0,082

ORDERING CODE

WUC

I

Ports Size:

- 1/8
- 1/4
- 3/8
- 1/2
- 3/4

Opening Pressure:

- Omit if 1 bar
- 0,3 bar
- 3 bar