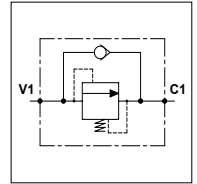


# WSD LF 30

## TECHNICAL DATA

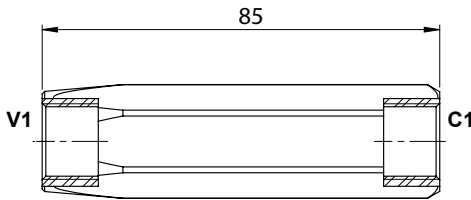
- **Flow:** 30 l/min
- **Max working pressure:** 350 bar
- **Materials:** Steel Body
- **Version:** Fixed Setting - Multiple of 10 bar
- **Weight:** 0,200 kg



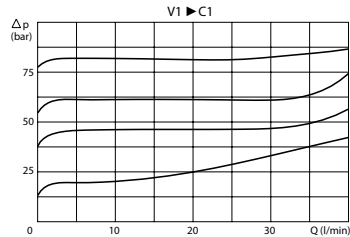
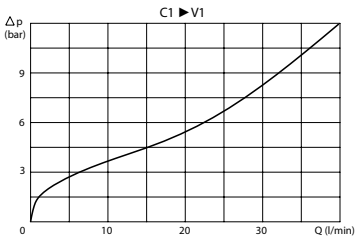
## PORTS

C1 - V1

3/8



## PRESSURE DROP CURVES



## ORDERING CODE

WSD

LF

30

3/8

**Value Setting:**

-20 -30  
-40 -50  
-60 -70  
-... -420