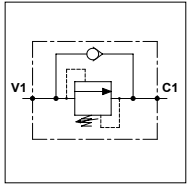


### WSD 40

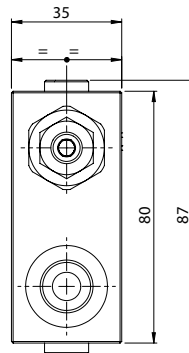
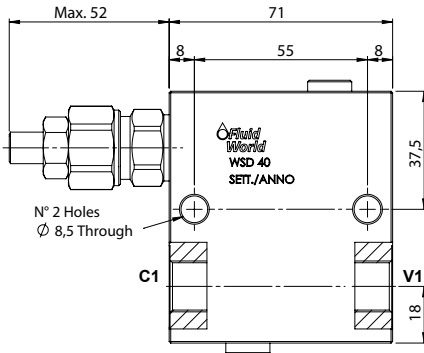
#### TECHNICAL DATA

- **Flow:** 40 l/min
- **Max setting pressure:** 350 bar
- **Max working pressure:** 250 bar (350 bar)
- **Materials:** Aluminium Body (Steel Body if required)
- **Version:** Poppet Type - Direct Acting
- **Weight:** 0,665 kg (1,465 kg)



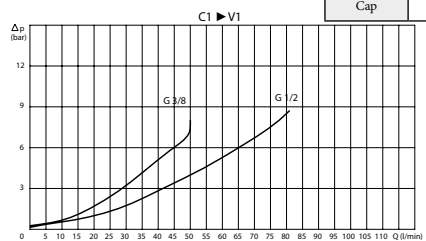
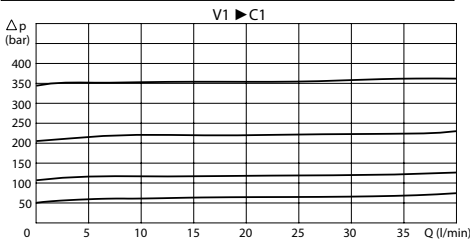
PORTS		
C1 - V1	3/8	1/2

SPRINGS			
Code	Adjustable pressure range bar	Pressure increase bar/turn	Standard setting bar
05	5-55	15	5
10	25-110	25	25
20	50-215	50	50
35	100-350	90	100



REGULATOR	
(S) Screw	
(V) Handknob	
OPTION	
(X) Tamper Proof Cap	

#### PRESSURE DROP CURVES



#### ORDERING CODE

WSD	40				
-----	----	--	--	--	--

- Ports Size:** - 3/8 - 1/2
- Material Body:** - Omit if aluminium - S = Steel
- Type of Regulator:** - S = Screw - V = Handknob
- Springs:** - 05 - 10 - 20 - 35
- Adjustment if Required:** - Omit if not required - Value - Value with X