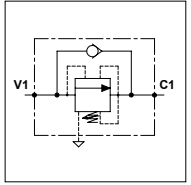


## WSD 40 CC

### TECHNICAL DATA

- **Flow:** 40 l/min
- **Max setting pressure:** 350 bar
- **Max working pressure:** 250 bar (350 bar)
- **Materials:** Aluminium Body (Steel Body if required)
- **Version:** Poppet Type - Direct Acting
- **Weight:** 0,675 kg (1,475 kg)

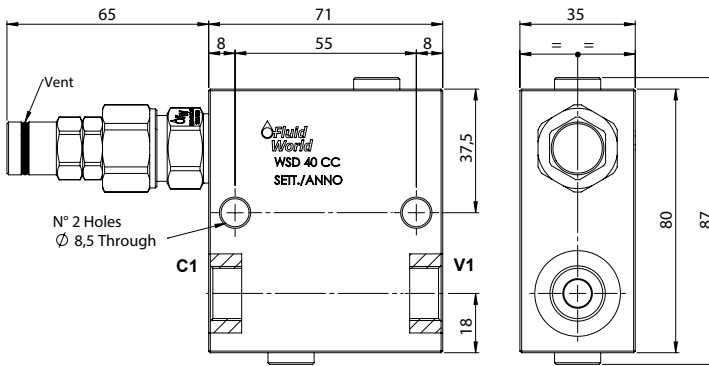


### PORTS

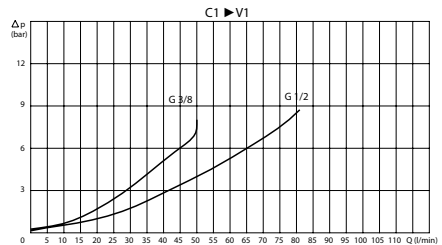
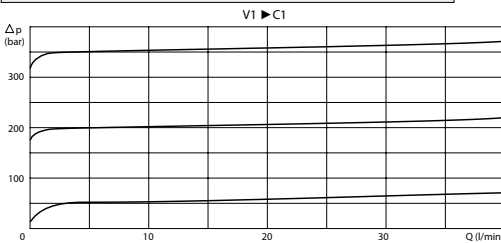
C1 - V1	3/8	1/2
---------	-----	-----

### SPRINGS

Code	Adjustable pressure range bar
10	5-50
20	40-210
30	100-350



### PRESSURE DROP CURVES



### ORDERING CODE

WSD

40

CC

Ports Size:

- 3/8
- 1/2

Material Body:

- Omit if aluminium
- S = Steel

Springs:

- 10
- 20
- 30

Adjustment if Required:

- Omit if not required
- Value