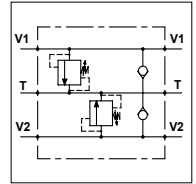
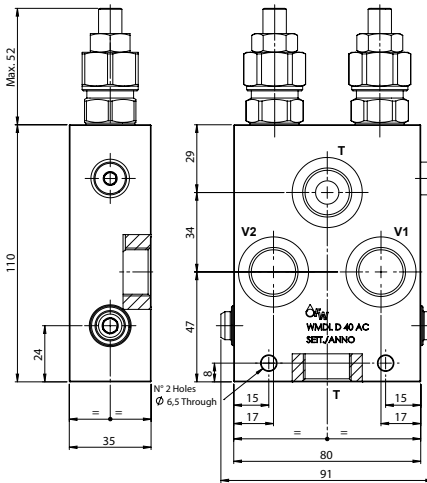


WMDL D 40 AC

TECHNICAL DATA

- **Flow:** 40 l/min
- **Max setting pressure:** 350 bar
- **Max working pressure:** 250 bar
- **Materials:** Aluminium Body
- **Version:** Poppet Type - Direct Acting
- **Weight:** 1,100 kg (2,100 kg)



PORTS

V1 - V2 - T	3/8	1/2
-------------	-----	-----

SPRINGS

Code	Adjustable pressure range bar	Pressure increase bar/turn	Standard setting bar
05	5-55	15	5
10	25-110	25	25
20	50-215	50	50
35	100-350	90	100

REGULATOR

(S)
Screw



(V)
Handknob

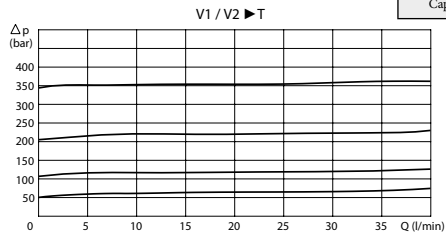
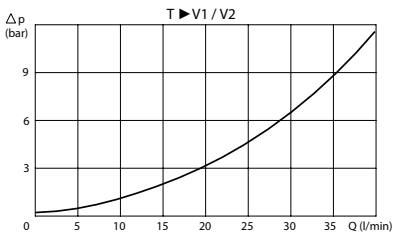


OPTION

(X)
Tammer Proof Cap



PRESSURE DROP CURVES



ORDERING CODE

WMDL

D

40

AC



- Ports Size:**
- 3/8
- 1/2
- Type of Regulator:**
- S = Screw
- V = Handknob
- Springs:**
- 05
- 10
- 20
- 35
- Adjustment if Required:**
- Omit if not required
- Value
- Value with X