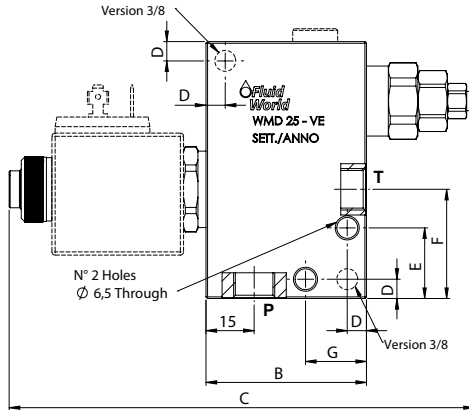
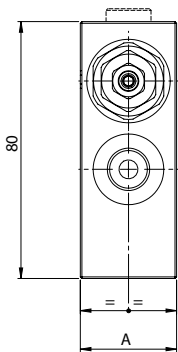
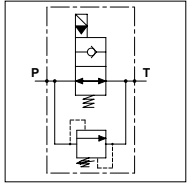


WMD 25 - VE

TECHNICAL DATA

- **Flow:** 25 l/min
- **Max working pressure:** 250 bar
- **Materials:** Aluminium Body
- **Note:** The Coil is not included
- **Weight:** 0,700 kg



PORTS

P - T	1/4	3/8
-------	-----	-----

DIMENSIONS

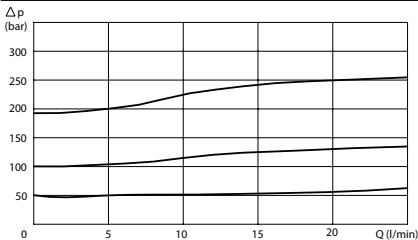
A	30	35
B	50	55
C	145	150
D	6	6
E	22	-
F	34	30
G	19	-

OPTION

Tamper Proof Cap



PRESSURE DROP CURVES



SPRINGS

Code	Adjustable pressure range bar	Pressure increase bar/turn	Standard setting bar
05	20-70	10	20
20	50-180	25	50
35	130-350	60	130

ORDERING CODE

WMD

25

VE

S

Ports Size:

- 1/4
- 3/8

Type of VE:

- NA
- NC

Springs:

- 05
- 20
- 35

Adjustment if Required:

- Omit if not required
- Value
- Value with X