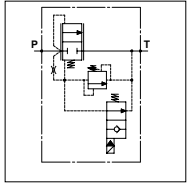


## WMD 200 - VE

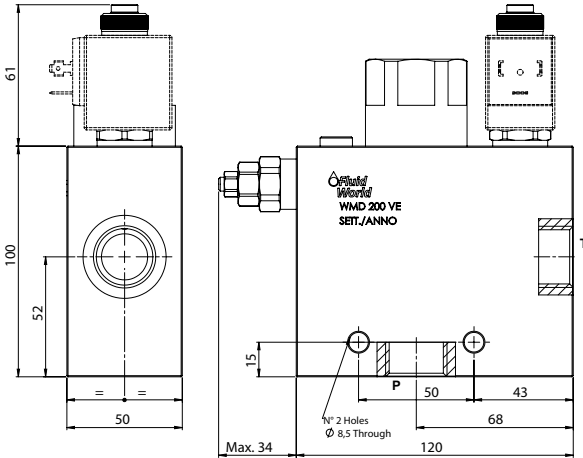
### TECHNICAL DATA

- **Flow:** 200 l/min
- **Max working pressure:** 250 bar
- **Materials:** Aluminium Body
- **Note:** The Coil is not included
- **Weight:** 2,100 kg




### PORTS

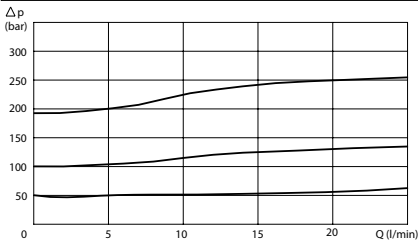
P - T	3/4	1
-------	-----	---



### OPTION

(X) Tamber Proof Cap	
-------------------------------	---

### PRESSURE DROP CURVES



### SPRINGS

Code	Adjustable pressure range bar	Pressure increase bar/turn	Standard setting bar
05	20-70	10	20
20	50-180	25	50
35	130-350	60	130

### ORDERING CODE



**Ports Size:**

- 3/4
- 1

**Type of VE:**

- NA
- NC

**Springs:**

- 05
- 20
- 35

**Adjustment if Required:**

- Omit if not required
- Value
- Value with X