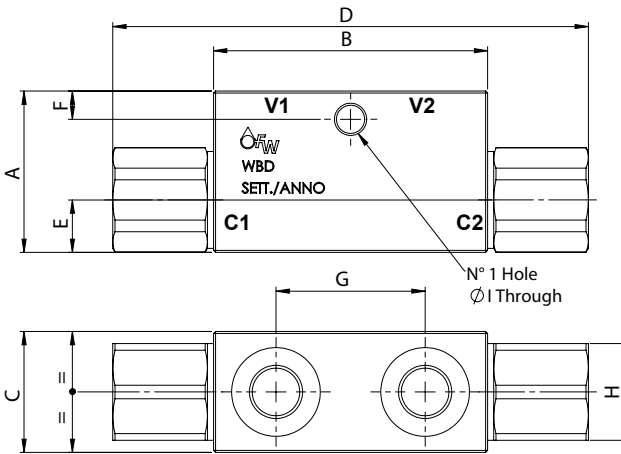
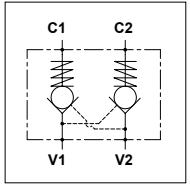


## WBD

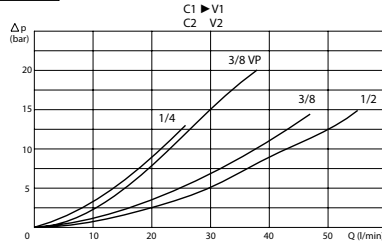
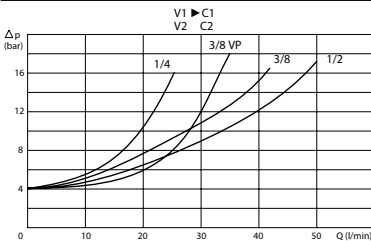
### TECHNICAL DATA

- **Flow:** See table
- **Max working pressure:** 350 bar (250 bar)
- **Cracking pressure:** See table
- **Materials:** Steel Body (Aluminium body if required)
- **Pilot ratio:** See table
- **Weight:** See table



PORTS				
C1 - C2 V1 - V2	1/4	3/8VP	3/8	1/2
DIMENSIONS				
A	40	40	50	50
B	68	68	80	80
C	30	30	30	30
D	118	118	144	144
E	13	13	16	16
F	8	8	8	8
G	38	38	40	40
H	22	22	27	27
I	M8	M8	M8	M8
Pilot Ratio	5,5:1	5,5:1	5:1	5:1
Max Pressure (bar)	350	350	300	300
Max Flow (l/min)	25	30	45	50
Weight (Kg)	0,670	0,630	0,950	0,900

### PRESSURE DROP CURVES



### SPRINGS

Code	Cracking pressure bar
<b>05</b>	0,5
Standard	4
<b>8</b>	8

### ORDERING CODE

**WBD**

#### Ports Size:

- 1/4
- 3/8VP
- 3/8
- 1/2

#### Material Body:

- Omit if steel
- A = Aluminium

#### Cracking Pressure:

- Omit if 4 bar
- 05 = 0,5 bar
- 8 = 8 bar

#### Seal on Piston:

- Omit if required
- NG = no required