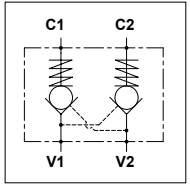
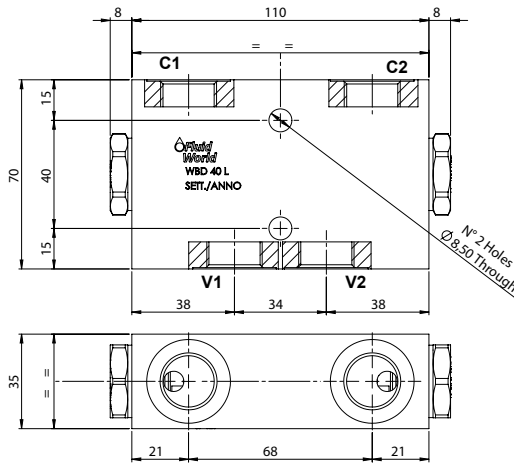


WBD 40 L

TECHNICAL DATA

- **Flow:** 40 l/min
- **Max working pressure:** 250 bar (350 bar)
- **Cracking pressure:** See table
- **Materials:** Aluminium Body (Steel body if required)
- **Pilot ratio:** 5,5:1
- **Weight:** 0,660 kg (1,540 kg)

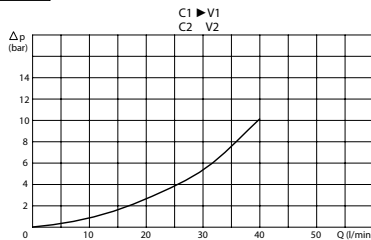
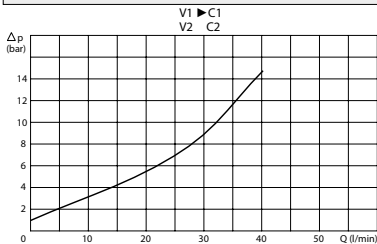


PORTS

C1 - C2
V1 - V2

1/2

PRESSURE DROP CURVES



SPRINGS

Code	Cracking pressure bar
Standard	1
2,5	2,5
5	5

ORDERING CODE

WBD

40

L

1/2

Material Body:

- Omit if aluminium
- S = Steel

Cracking Pressure:

- Omit if 1 bar
- 2,5 = 2,5 bar
- 5 = 5 bar

Seal on Piston:

- Omit if not required
- G = Required