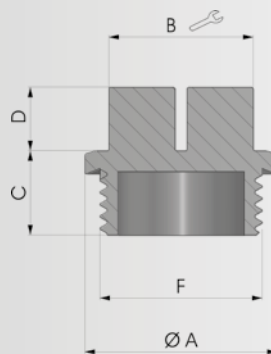


> **Materiale di produzione:**

Nylon PA 6

> **Production material :**

Nylon PA 6



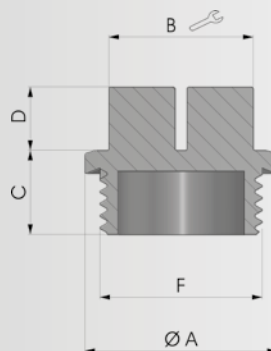
COD.	F	A	B	C	D	Kg
NBTFPLG1/8	1/8"	17	13	11	8	0,001
NBTFPLG1/4	1/4"	19	13	10	8	0,002
NBTFPLG3/8	3/8"	22	17	11	9	0,004
NBTFPLG1/2	1/2"	27	19	14	11	0,005
NBTFPLG3/4	3/4"	32	24	14	11	0,007
NBTFPLG1	1"	40	27	18	11	0,010

> **Materiale di produzione:**

Nylon PA 6

> **Production material :**

Nylon PA 6



COD.	F	A	B	C	D	Kg
▶ NBTFPLM1415	M14X1.5	19	13	12	8	0,002
NBTFPLM1615	M16X1.5	22	17	12	8	0,003
NBTFPLM1815	M18X1.5	24	17	12	9	0,004
▶ NBTFPLM2015	M20X1.5	26	19	12	12	0,005

▶ a richiesta su lotto minimo / on request on a minimum batch