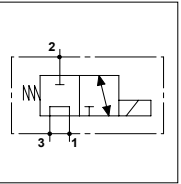
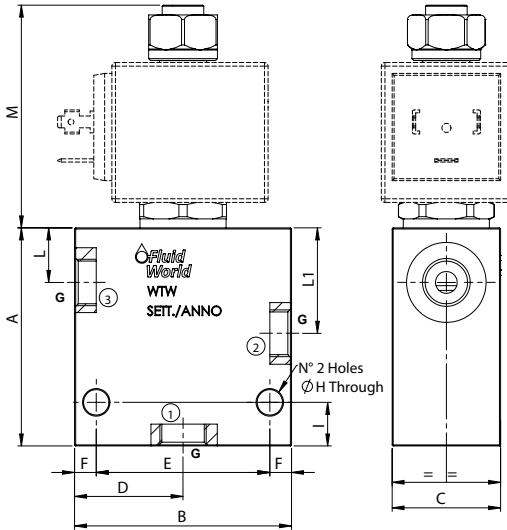


WTW S08 03

TECHNICAL DATA

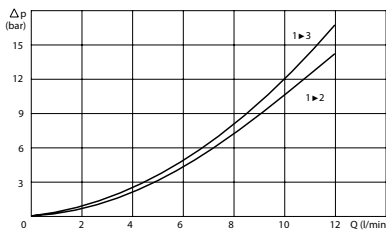
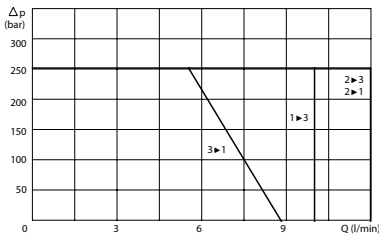
- **Flow:** 12 l/min
- **Max working pressure:** 210 bar (210 bar)
- **Materials:** Aluminium Body (Steel body if required)
- **Version:** Spool Type - Direct Acting
- **Note:** 22W coil for S08 on the page 290



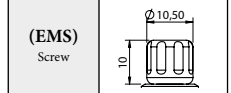
PORTS

Size	S08
G	1/4
	3/8
DIMENSIONS	
A	60
B	60
C	30
D	30
E	46
F	7
H	7
I	12
L	15,5
L1	29,5
M	61,8

PRESSURE DROP CURVES



MANUAL OVERRIDE



ORDERING CODE

WTW

S08

03

Manual Override:

- Omit if not required
- EMS = Screw

Ports Size:

- 1/4
- 3/8

Material Body:

- Omit if steel
- A = Aluminium

Rated Voltage

- Coil:**
- Omit if not required
 - 12
 - 24