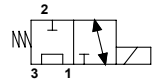


# WTW S08 03

## TECHNICAL DATA

- **Flow:** 12 l/min
- **Max working pressure:** 210 bar
- **Materials:** Cartridge in Steel zinc plated
- **Version:** Spool Type - Direct Acting
- **Cavity:** FW3403000
- **Installation torque:** 30 Nm
- **Weight:** 0,150 kg

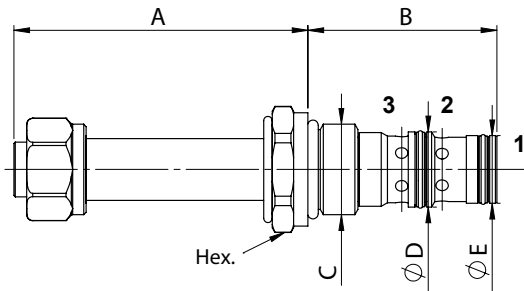


## PORTS

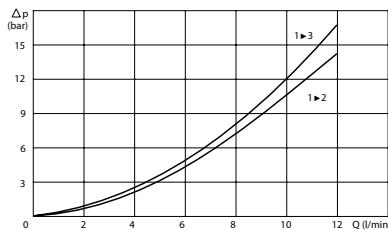
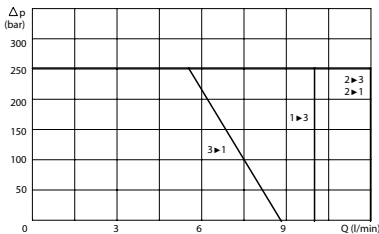
Size	S08
------	-----

## DIMENSIONS

A	61,8
B	39,7
C	3/4-16UNF
D	15,8
E	14,2
Hex.	24



## PRESSURE DROP CURVES



## MANUAL OVERRIDE

(EMS)  
Screw



## ORDERING CODE

WTW

S08

03



**Manual Override:**  
- Omit if not required  
- EMS = Screw