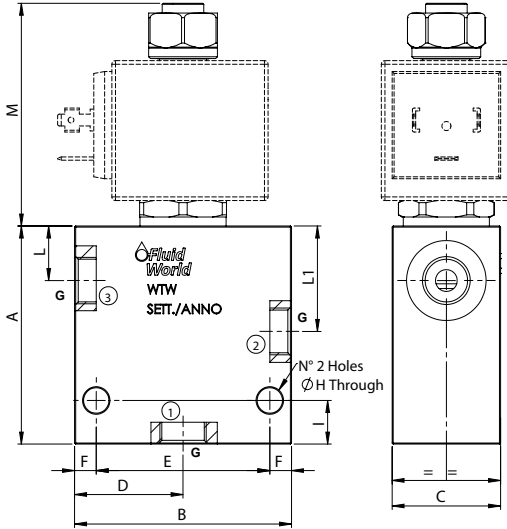
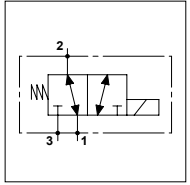


WTW - 02

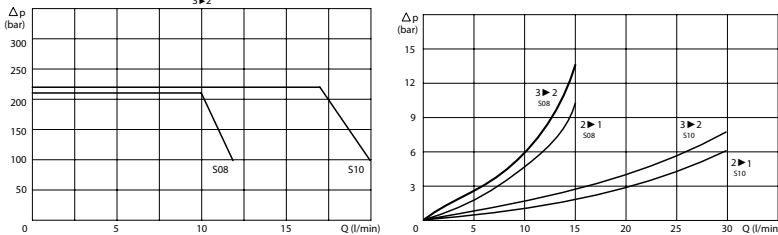
TECHNICAL DATA

- **Flow:** See table
- **Max working pressure:** 210 bar (210 bar)
- **Materials:** Aluminium Body (Steel body if required)
- **Version:** Spool Type - Direct Acting
- **Note:** 22W coil for S08 on the page 290
36W coil for S10 on the page 291



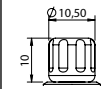
PORTS		
Size	S08	S10
G	1/4	1/2
	3/8	
DIMENSIONS		
A	60	65
B	60	60
C	30	35
D	30	30
E	46	48
F	7	6
H	7	7
I	12	7
L	15,5	18,5
L1	29,5	34,5
M	61,3	82,4
Max Flow (l/min)	12	20

PRESSURE DROP CURVES



MANUAL OVERRIDE

(EMS)
Screw



ORDERING CODE

WTW

02

Ports Size:

- S08 = SAE 08/3
- S10 = SAE 10/3

Manual Override:

- Omit if not required
- EMS = Screw

Ports Size:

- 1/4 ; 3/8
- 1/2

Material Body:

- Omit if steel
- A = Aluminium

Rated Voltage

- Coil:**
- Omit if not required
- 12
- 24