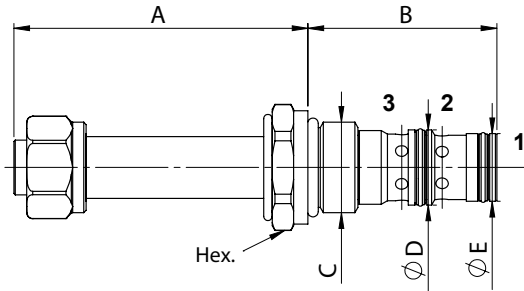
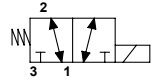


# WTW - 02

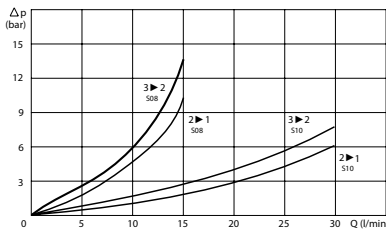
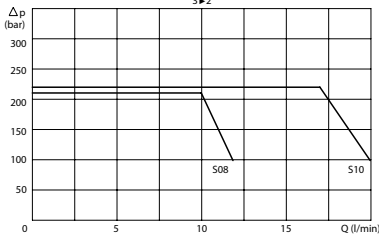
## TECHNICAL DATA

- **Flow:** See table
- **Max working pressure:** See table
- **Materials:** Cartridge in Steel zinc plated
- **Version:** Spool Type - Direct Acting
- **Cavity:** See table
- **Installation torque:** See table
- **Weight:** See table



PORTS		
Size	S08	S10
DIMENSIONS		
A	61,8	82,9
B	39,7	45,8
C	3/4-16UNF	7/8-14UNF
D	15,8	17,4
E	14,2	15,8
Hex.	24	27
Max Pressure (bar)	210	210
Max Flow (l/min)	12	20
Cavity	FW3403000	FW7803000
Installation torque (Nm)	30	40
Weight (kg)	0,150	0,290

## PRESSURE DROP CURVES



## MANUAL OVERRIDE

(EMS)  
Screw



## ORDERING CODE

WTW

02

### Ports Size:

- S08 = SAE 08/3
- S10 = SAE 10/3

### Manual Override:

- Omit if not required
- EMS = Screw