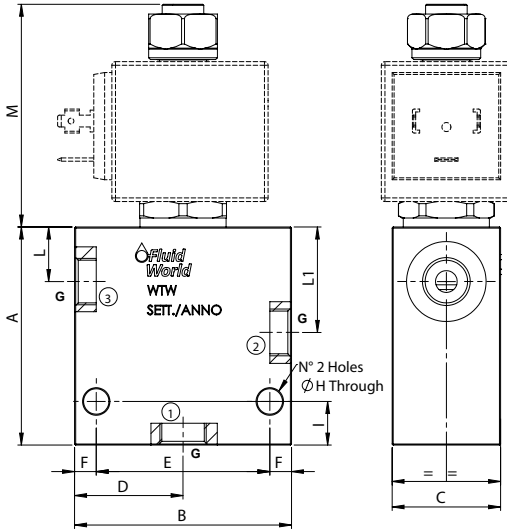
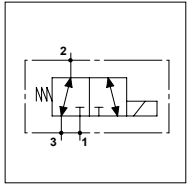


### WTW - 01

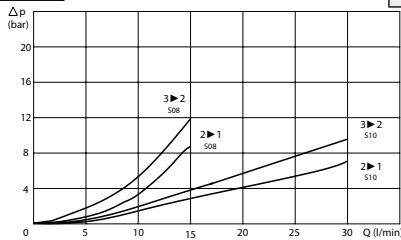
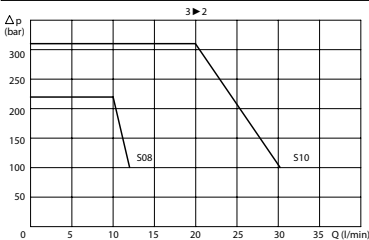
#### TECHNICAL DATA

- **Flow:** See table
- **Max working pressure:** 210 bar (210 bar)
- **Materials:** Aluminium Body (Steel body if required)
- **Version:** Spool Type - Direct Acting
- **Note:** 22W coil for S08 on the page 290  
36W coil for S10 on the page 291



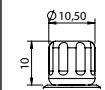
| PORTS            |            |            |
|------------------|------------|------------|
| Size             | <b>S08</b> | <b>S10</b> |
| G                | 1/4        | 1/2        |
|                  | 3/8        |            |
| DIMENSIONS       |            |            |
| A                | 60         | 65         |
| B                | 60         | 60         |
| C                | 30         | 35         |
| D                | 30         | 30         |
| E                | 46         | 48         |
| F                | 7          | 6          |
| H                | 7          | 7          |
| I                | 12         | 7          |
| L                | 15,5       | 18,5       |
| L1               | 29,5       | 34,5       |
| M                | 61,2       | 76,5       |
| Max Flow (l/min) | 12         | 20         |

#### PRESSURE DROP CURVES



#### MANUAL OVERRIDE

(EMS)  
Screw



#### ORDERING CODE

**WTW**

**01**

#### Ports Size:

- S08 = SAE 08/3
- S10 = SAE 10/3

#### Manual Override:

- Omit if not required
- EMS = Screw

#### Ports Size:

- 1/4 ; 3/8
- 1/2

#### Material Body:

- Omit if steel
- A = Aluminium

#### Rated Voltage

- Coil:**
- Omit if not required
  - 12
  - 24