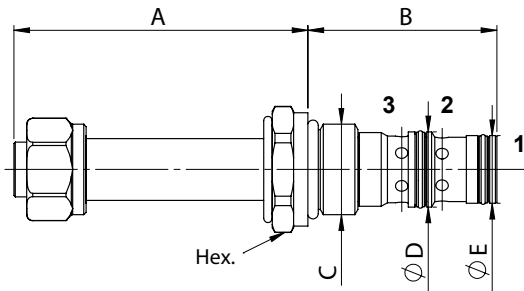
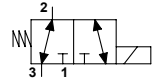


WTW - 01

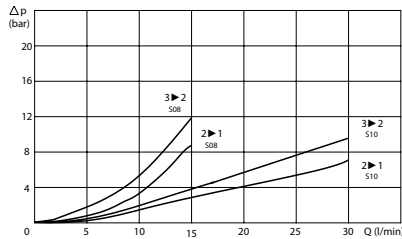
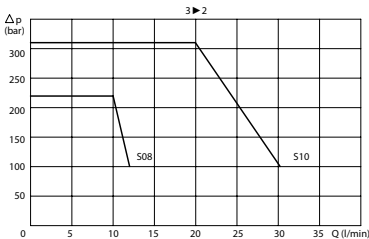
TECHNICAL DATA

- **Flow:** See table
- **Max working pressure:** See table
- **Materials:** Cartridge in Steel zinc plated
- **Version:** Spool Type - Direct Acting
- **Cavity:** See table
- **Installation torque:** See table
- **Weight:** See table



PORTS		
Size	S08	S10
DIMENSIONS		
A	61,7	77
B	39,7	46,5
C	3/4-16UNF	7/8-14UNF
D	15,8	17,4
E	14,2	15,8
Hex.	24	27
Max Pressure (bar)	210	210
Max Flow (l/min)	12	20
Cavity	FW3403000	FW7803000
Installation torque (Nm)	30	40
Weight (kg)	0,150	0,300

PRESSURE DROP CURVES



MANUAL OVERRIDE

(EMS)
Screw



ORDERING CODE

WTW

Ports Size:

- S08 = SAE 08/3
- S10 = SAE 10/3

01

Manual Override:

- Omit if not required
- EMS = Screw