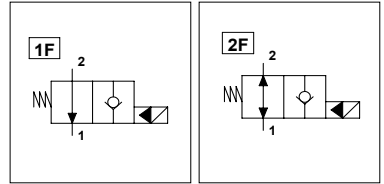
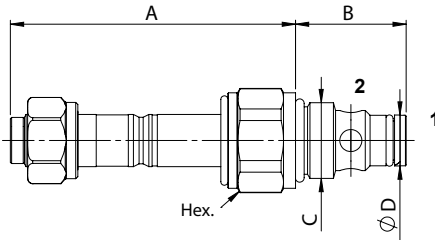


WST - NA

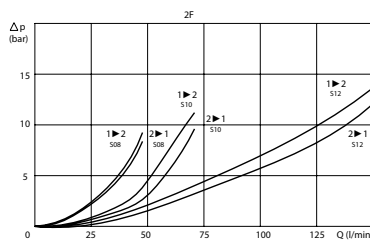
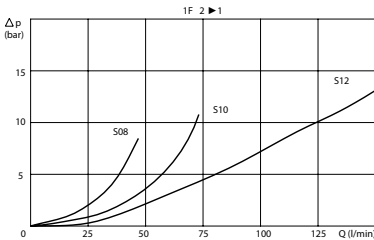
TECHNICAL DATA

- **Flow:** See table
- **Max working pressure:** 350 bar
- **Materials:** Cartridge in Steel zinc plated
- **Version:** Poppet Type - Pilot Acting
- **Cavity:** See table
- **Installation torque:** See table
- **Weight:** See table

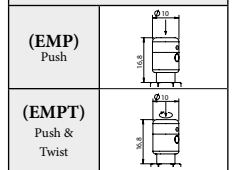


PORTS			
Size	S08	S10	S12
DIMENSIONS			
A	71,2	68,8	65,8
B	27,6	32	46
C	3/4-16UNF	7/8-14UNF	1 1/16-12UNF
D	12,7	15,8	22,2
Hex.	24	27	32
Max Flow (l/min)	40	70	150
Cavity	FW3402000	FW7802000	FW1160200
Installation torque (Nm)	30	40	60
Weight (kg)	0,160	0,190	0,260

PRESSURE DROP CURVES



MANUAL OVERRIDE



ORDERING CODE

WST

NA

Ports Size:

- S08 = SAE 08/2
- S10 = SAE 10/2
- S12 = SAE 12/2

Type of Scheme:

- Omit for scheme 1F
- 2F = Scheme 2F

Manual Override:

- Omit if not required
- EMP = Push
- EMP-T = Push & Twist