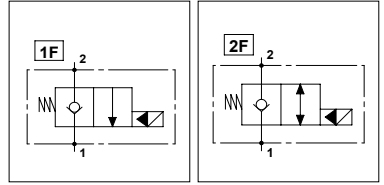
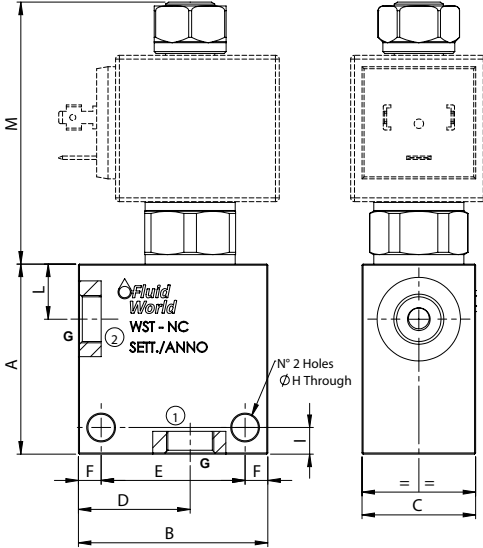


WST - NC

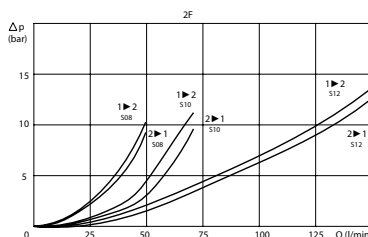
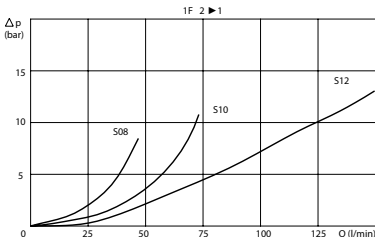
TECHNICAL DATA

- **Flow:** See table
- **Max working pressure:** 250 bar (350 bar)
- **Materials:** Aluminium Body (Steel body if required)
- **Version:** Poppet Type - Pilot Acting
- **Note:** 22W coil on the page 290



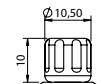
PORTS				
Size	S08	S10	S12	
G	1/4	1/2	3/4	1
	3/8			
DIMENSIONS				
A	50	56	70	80
B	50	60	70	80
C	30	35	40	50
D	30	35	40	46
E	38	48	54	60
F	6	6	8	10
H	7	7	9	8,5
I	7	7	8	8
L	14,5	18,5	26,5	26,5
M	68,9	66,5	63,5	63,5
Max Flow (l/min)	40	70	150	150

PRESSURE DROP CURVES



MANUAL OVERRIDE

(EMS)
Screw



ORDERING CODE

WST

NC

Ports Size:

- S08 = SAE 08/2
- S10 = SAE 10/2
- S12 = SAE 12/2

Type of Scheme:

- Omit for scheme 1F
- 2F = Scheme 2F

Manual Override:

- Omit if not required
- EMS = Screw

Ports Size:

- 1/4 ; 3/8
- 1/2
- 3/4 ; 1

Material Body:

- Omit if steel
- A = Aluminium

Optional Body (Only for S08):

- Omit if not required
- B
- EMS

Rated Voltage Coil:

- Omit if not required
- 12
- 24