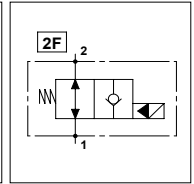
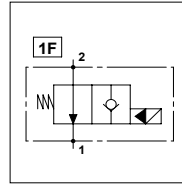
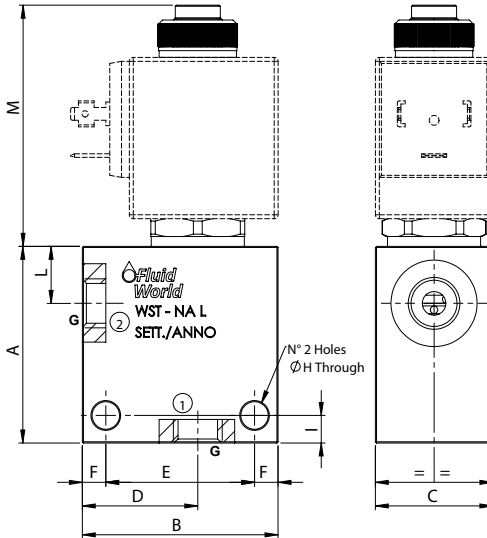


WST S08 NA - L

TECHNICAL DATA

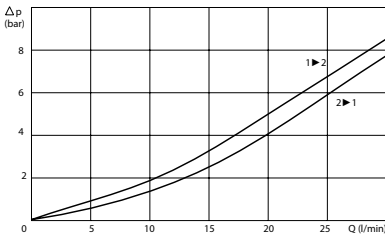
- **Flow:** 30 l/min
- **Max working pressure:** 250 bar (300 bar)
- **Materials:** Aluminium Body (Steel body if required)
- **Version:** Poppet Type - Pilot Acting
- **Note:** 18W coil on the page 289



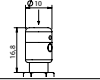
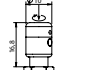
PORTS

Size	S08
G	1/4
	3/8
DIMENSIONS	
A	50
B	50
C	30
D	30
E	38
F	6
H	7
I	7
L	14,5
M	61,3

PRESSURE DROP CURVES



MANUAL OVERRIDE

(EMP) Push	
(EMPT) Push & Twist	

ORDERING CODE

WST

S08

NA

L

Type of Scheme:

- Omit for scheme 1F
- 2F = Scheme 2F

Manual Override:

- Omit if not required
- EMP = Push
- EMPT = Push & Twist

Ports Size:

- 1/4
- 3/8

Material Body:

- Omit if steel
- A = Aluminium

Optional Body (Only for S08):

- Omit if not required
- B
- EMS

Rated Voltage Coil:

- Omit if not required
- 12
- 24