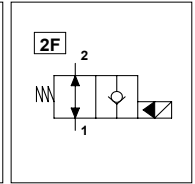
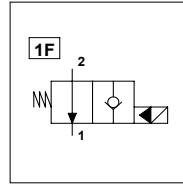
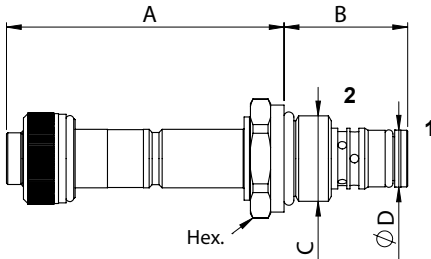


WST S08 NA - L

TECHNICAL DATA

- **Flow:** 30 l/min
- **Max working pressure:** 300 bar
- **Materials:** Cartridge in Steel zinc plated
- **Version:** Poppet Type - Pilot Acting
- **Cavity:** FW3402000
- **Installation torque:** 30 Nm
- **Weight:** 0,120 kg



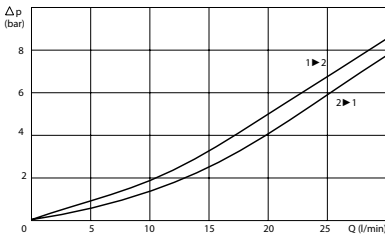
PORTS

Size S08

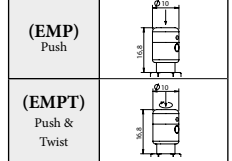
DIMENSIONS

A	61,8
B	27,5
C	3/4-16UNF
D	12,7
Hex.	24

PRESSURE DROP CURVES



MANUAL OVERRIDE



ORDERING CODE

WST

S08

NA

L

Type of Scheme:
 - Omit for scheme 1F
 - 2F = Scheme 2F

Manual Override:
 - Omit if not required
 - EMP = Push
 - EMPT = Push & Twist