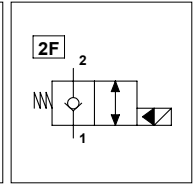
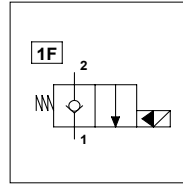
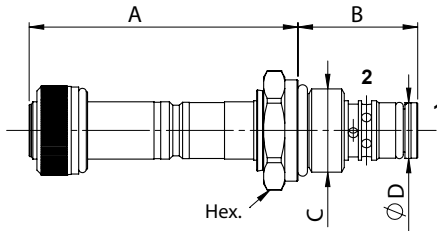


WST S08 NC - L

TECHNICAL DATA

- **Flow:** 30 l/min
- **Max working pressure:** 300 bar
- **Materials:** Cartridge in Steel zinc plated
- **Version:** Poppet Type - Pilot Acting
- **Cavity:** FW3402000
- **Installation torque:** 30 Nm
- **Weight:** 0,120 kg



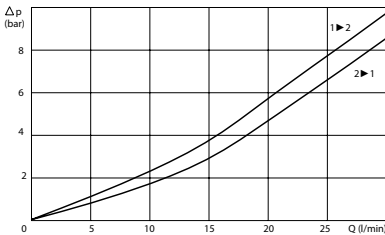
PORTS

Size S08

DIMENSIONS

A	61,1
B	27,2
C	3/4-16UNF
D	12,7
Hex.	24

PRESSURE DROP CURVES



MANUAL OVERRIDE

(EMS)
Screw



ORDERING CODE

WST

S08

NC

L

Type of Scheme:
- Omit for scheme 1F
- 2F = Scheme 2F

Manual Override:
- Omit if not required
- EMS = Screw