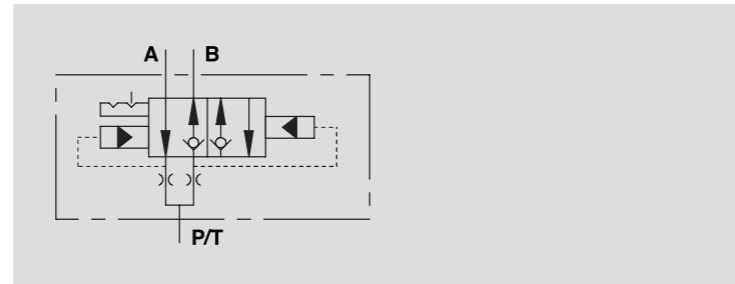


## VALVOLA PER SEMINATRICE SEGNAFILE SEMPLICE EFFETTO VALVE FOR ROW MARKER ON SEEDING MACHINE



SCHEMA IDRAULICO  
HYDRAULIC DIAGRAM



**IMPIEGO:**

Valvola utilizzata su macchine seminatrici per movimentare i segnafile. Alimentando e scaricando la bocca P/T si permette l'inversione automatica della salita/discesa di 2 cilindri singolo o doppio effetto.

**MATERIALI E CARATTERISTICHE:**

Corpo: acciaio zincato.  
Componenti interni: acciaio temprato termicamente e rettificato.  
Guarnizioni: BUNA N standard.  
Tenuta: trafileamento trascurabile.

**MONTAGGIO:**

Collegare P/T all'alimentazione e A e B ai cilindri.

**A RICHIESTA:**

E' possibile fornire la valvola con le bocche A, B, P/T con:  
• riduzione femmina G1/4"

**USE AND OPERATION:**

This type of valve is used on seeding machines to control the row marker. It allows the automatic ascent/descent inversion of single and double effect actuators, loading and unloading port P/T.

**MATERIALS AND FEATURES:**

Body: zinc-plated steel.  
Internal parts: hardened and ground steel.  
Seals: BUNA N standard.  
Leakage: Minimal leakage.

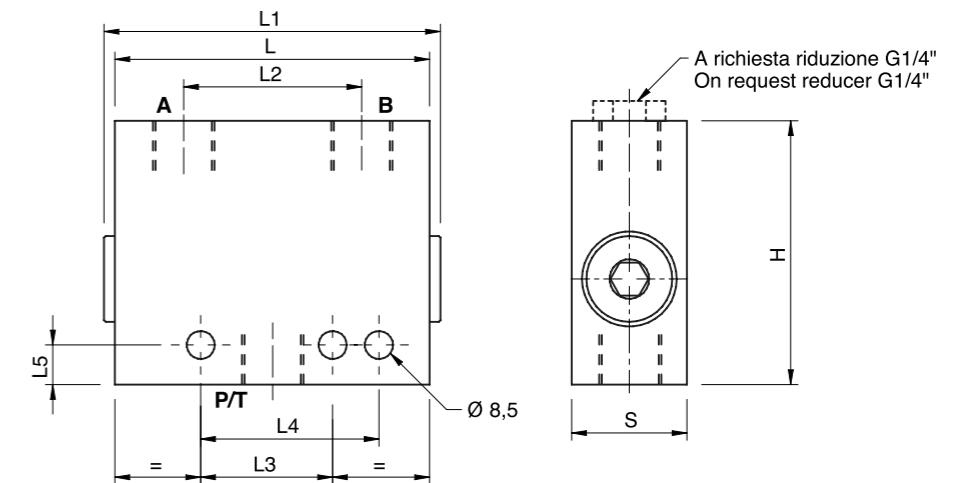
**CONNECTIONS:**

Connect P/T to the supply and A and B to the actuator.

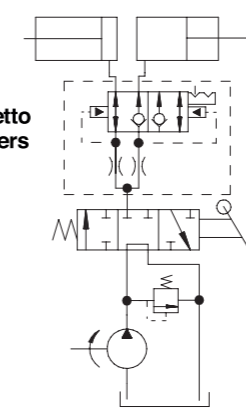
**ON REQUEST:**

The valve can be supplied with:  
• G 1/4" female adapter

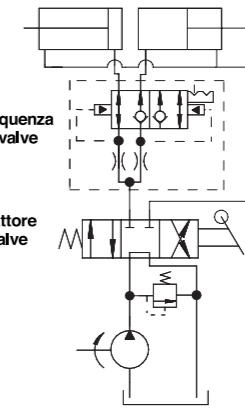
CODICE CODE	SIGLA TYPE	PRESSIONE MAX MAX PRESSURE Bar
<b>V1450</b>	VDFS 3/4" - 16 UNF	350



Con cilindri semplice effetto  
With single acting cylinders

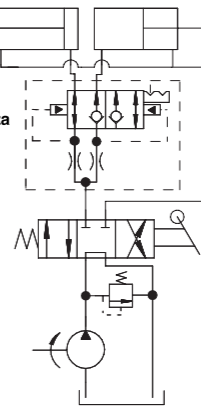


Valvola di sequenza  
Sequence valve



Con cilindri doppio effetto  
With double acting cylinders

Valvola trattore  
Tractor valve



CODICE CODE	SIGLA TYPE	A - B P / T SAE	L mm	L1 mm	L2 mm	L3 mm	L4 mm	L5 mm	H mm	S mm	PESO WEIGHT Kg.
<b>V1450</b>	VDFS 3/4" - 16 UNF	3/4" - 16	94	102	54	40	54	12	80	35	1,830