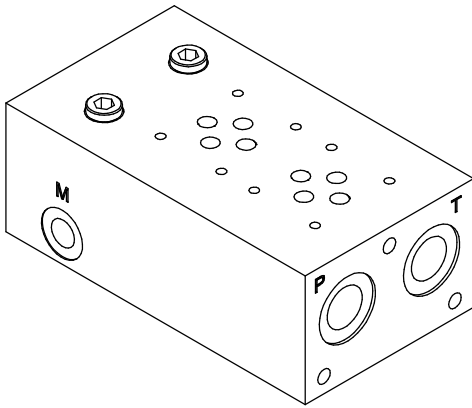
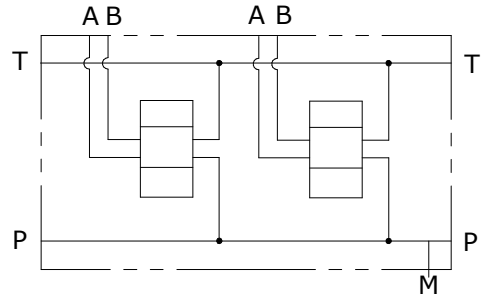


**MONOBLOCCO A-B POSTERIORI 1/2", P-T 1/2" CON VALVOLA  
ELETTRICA OPZIONALE  
MONOBLOCK A-B REAR PORTS 1/2" P-T 1/2" WITH OPTIONAL  
VENTING VALVE**

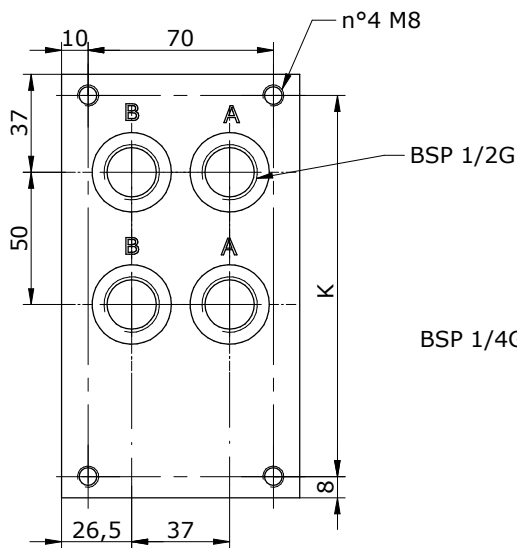
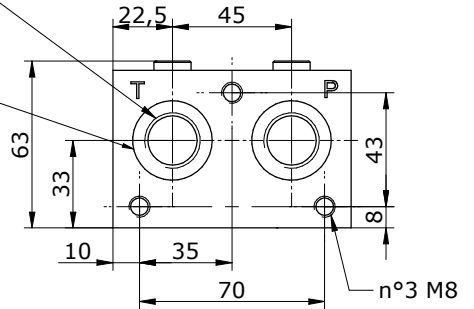


Schema idraulico  
Hydraulic diagram

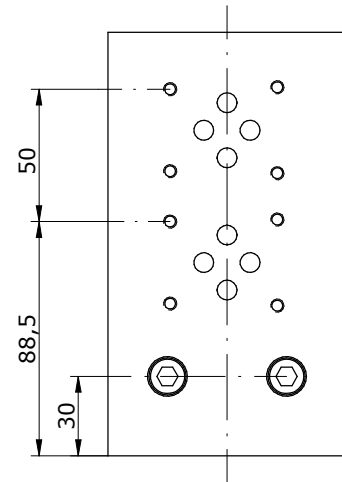
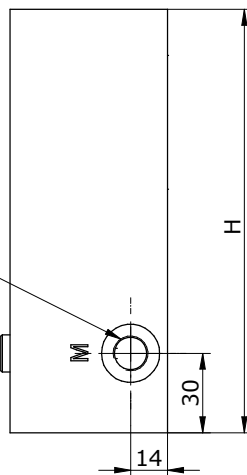


n°2 BSP 1/2G

INTERFACCIA AUSILIARE SU ELEMENTI  
AGGIUNTIVI (USARE OR2106)  
INTERFACE FOR ADDITIONAL AUXILIARY  
ELEMENTS (USE OR2106)

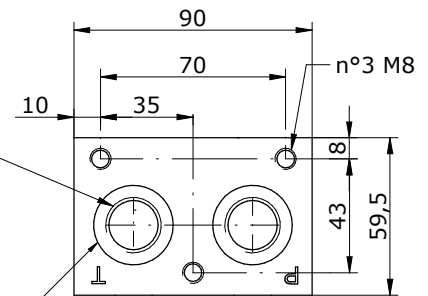


BSP 1/4G



n°2 BSP 1/2G

INTERFACCIA AUSILIARE SU ELEMENTI  
AGGIUNTIVI (USARE OR2106)  
INTERFACE FOR ADDITIONAL AUXILIARY  
ELEMENTS (USE OR2106)



**E\_06 - 13 - 12 - \_\_\_ - 0**

POS.	01	02	03	04	05	06	07	08	09	10
H	110	160	210	260	310	360	410	460	510	560
K	94	144	194	244	294	344	394	444	494	544

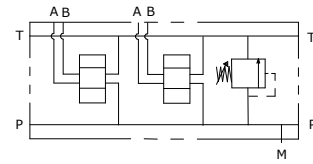
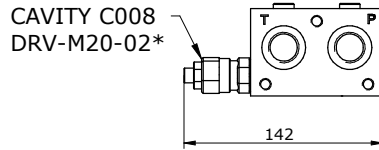
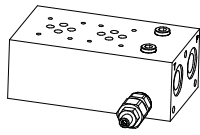
Via Nicolò Copernico 12/c-d  
29027 Casoli Di Gariga - Podenzano (PC) Italy

www.oleodinamica2mp.it  
Tel +39 0523 523231  
Fax +39 0523 524509

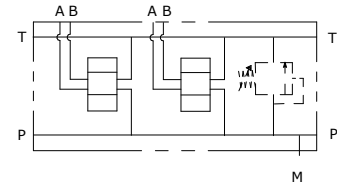
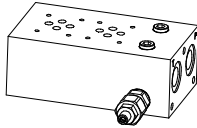
**MONOBLOCCO A-B POSTERIORI 1/2", P-T 1/2" CON VALVOLA ELETTRICA OPZIONALE**  
**MONOBLOCK A-B REAR PORTS 1/2" P-T 1/2" WITH OPTIONAL VENTING VALVE**

**OLEODINAMICA**  
**2mp**

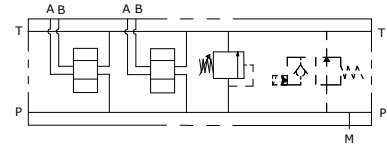
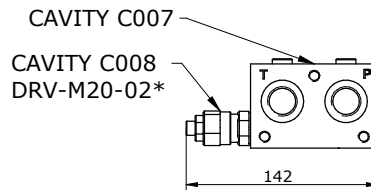
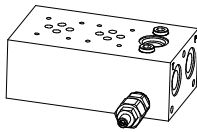
**E\_06 - 13 - 12 - \_\_\_ - 1**



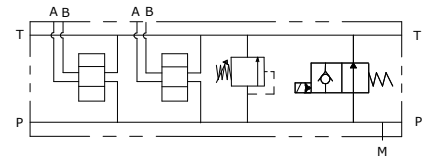
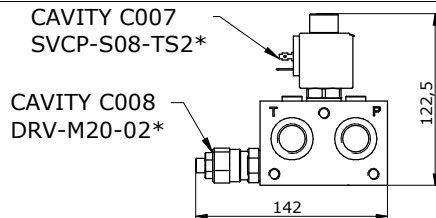
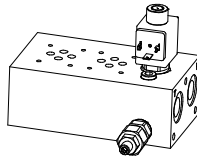
**E\_06 - 13 - 12 - \_\_\_ - 2**



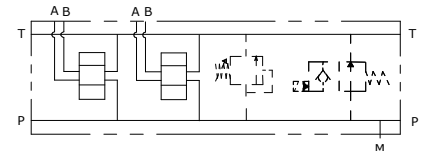
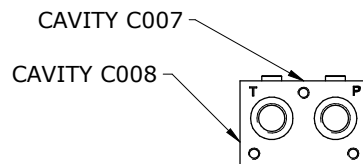
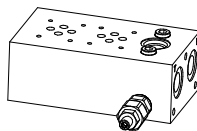
**E\_06 - 13 - 12 - \_\_\_ - 4**



**E\_06 - 13 - 12 - \_\_\_ - 5**



**E\_06 - 13 - 12 - \_\_\_ - 6**



**E\_06 - 13 - 12 - \_\_\_\_\_**

**S** = STEEL  
**A** = ALUMINIUM

MOUNTING POSITIONS: 01÷10

**0** = WITHOUT RELIEF VALVE  
**1** = WITH RELIEF VALVE  
**2** = RELIEF VALVE READY  
**4** = WITH R.V. AND V.V. READY  
**5** = WITH R.V. AND V.V.  
**6** = V.V. READY AND R.V. READY

**0** = WITHOUT R.V.  
**1** = 5-55 bar  
**2** = 25-110 bar  
**3** = 50-215 bar  
**4** = 100-350 bar  
**5** = 100-420 bar

**0** = WITHOUT RELIEF VALVE  
**H** = HEX. HEAD SCREW    **K** = KNOB    **C** = COVER CAP NOT ADJUSTABLE

**SEALS**  
**N** = BUNA  
**V** = VITON

**VENTING VALVE**  
**000** = WITHOUT V.V.  
**TS2** = NORMALLY OPEN

**VENTING VALVE**  
**0** = NO MANUAL OVERRIDE  
**3** = PUSH PIN  
**4** = PUSH BOTTON  
**5** = HEX. ALLEN

**CONNECTOR TYPE**  
**0** = WITHOUT COIL  
**C** = CAVI / LEADS  
**D** = DIN 43650  
**G** = DEUTSCH DT04-2P  
**A** = AMP JUNIOR

**TENSIONE / VOLTAGE**  
**000** = WITHOUT COIL  
**D12** = 12 VDC  
**D24** = 24 VDC  
**220** = 220 RAC

\*see **CARTRIDGE VALVES** datasheets

Via Nicolò Copernico 12/c-d  
 29027 Casoni Di Gariga - Podenzano (PC) Italy

www.oleodinamica2mp.it  
 Tel +39 0523 523231  
 Fax +39 0523 524509