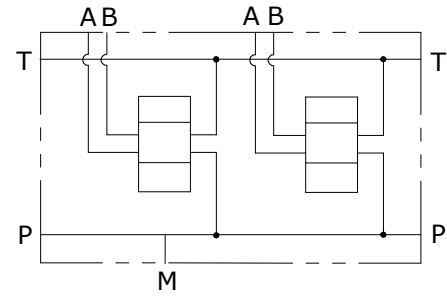
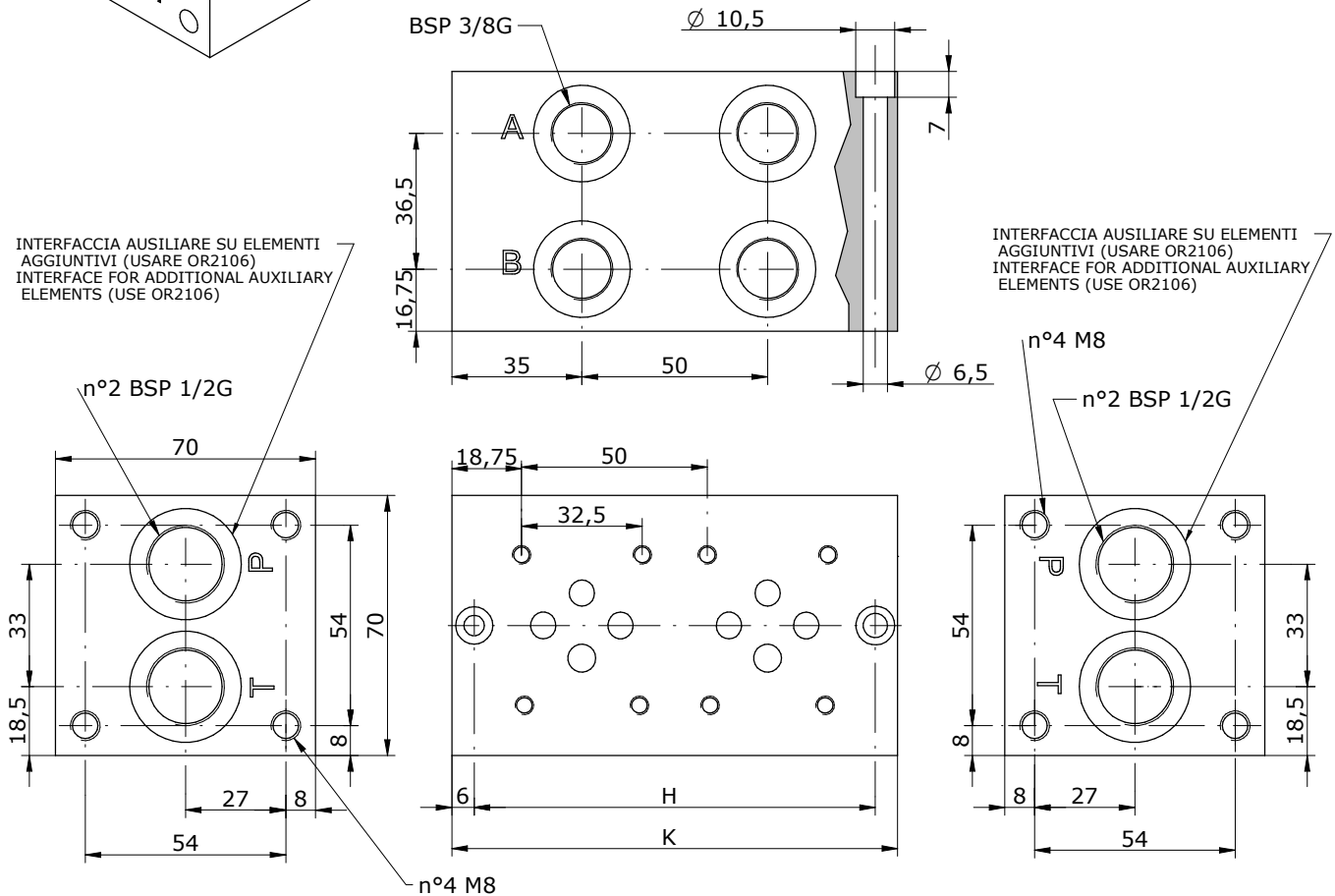


Schema idraulico  
 Hydraulic diagram



INTERFACCIA AUSILIARE SU ELEMENTI  
 AGGIUNTIVI (USARE OR2106)  
 INTERFACE FOR ADDITIONAL AUXILIARY  
 ELEMENTS (USE OR2106)

INTERFACCIA AUSILIARE SU ELEMENTI  
 AGGIUNTIVI (USARE OR2106)  
 INTERFACE FOR ADDITIONAL AUXILIARY  
 ELEMENTS (USE OR2106)



POS.	01	02	03	04	05	06	07	08	09	10
H	58	108	158	208	258	308	358	408	458	508
K	70	120	170	220	270	320	370	420	470	520

**E\_ 06 - 12 - 38 -**

**S** = STEEL  
**A** = ALUMINIUM

MOUNTING POSITIONS: 01 ÷ 10